

Setup Instructions

Using Android Auto with a USB cable

First connection

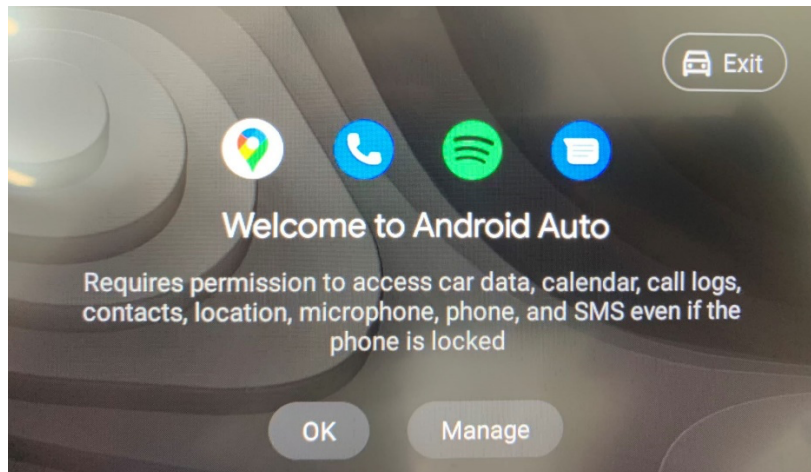
- Make sure there is an Android Auto icon on the home screen



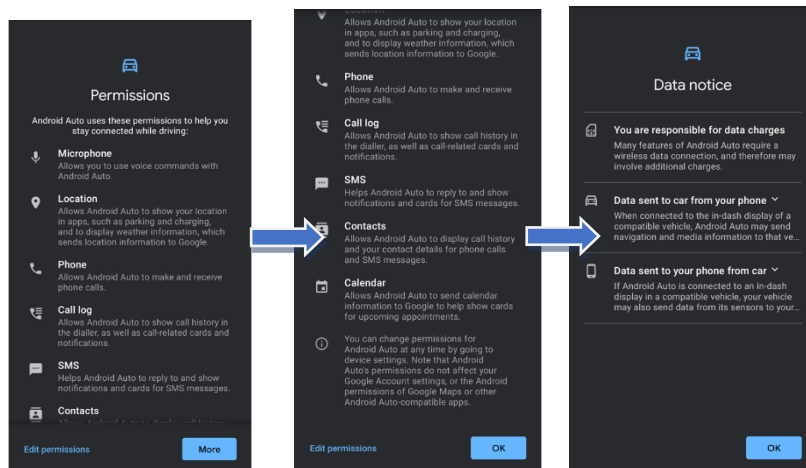
- Make sure that the Android Auto setting is "ON" on the radio.



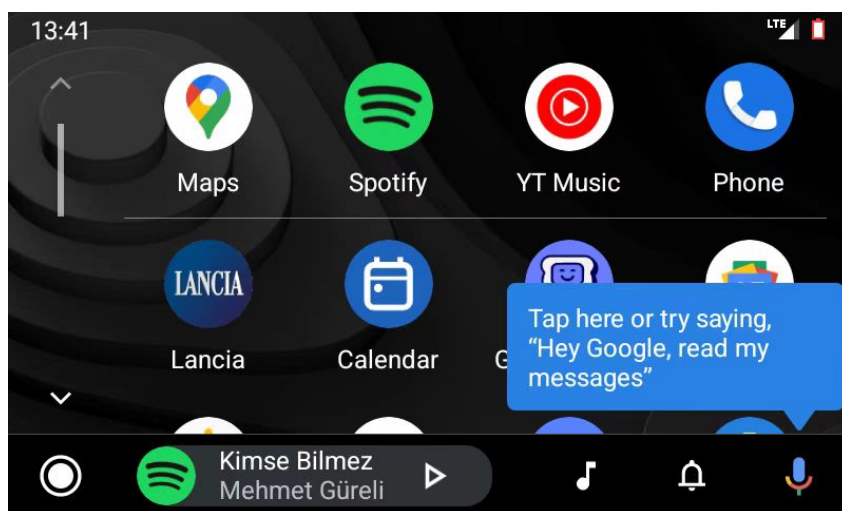
- Tap 'Manage' on the headunit



- Confirm and Grant access permissions on the Android device when prompted



- Tap "Continue" on head unit then Android Auto projection mode will be displayed

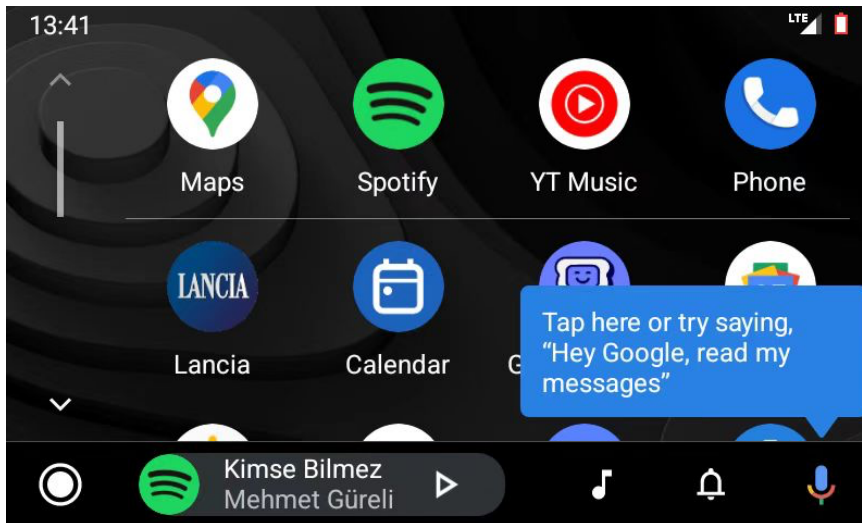


Second or subsequent connections

- Make sure there is an Android Auto icon on the home screen



- Connect an Android-compatible device with the USB cable
- Android Auto projection mode will be displayed



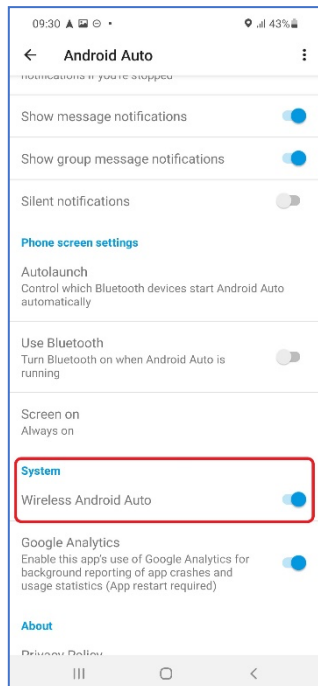
Using Android Auto via Wi-Fi connection

First connection

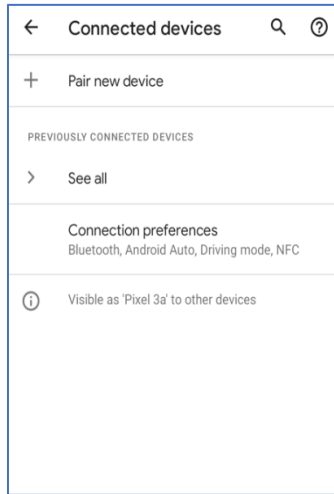
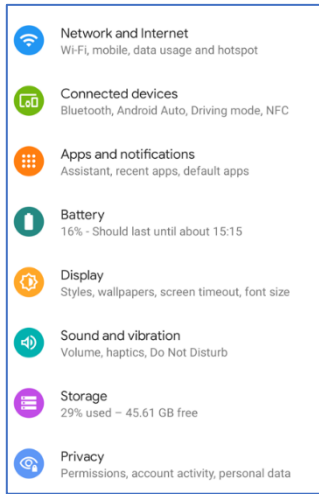
- Make sure there is an Android Auto icon on the home screen



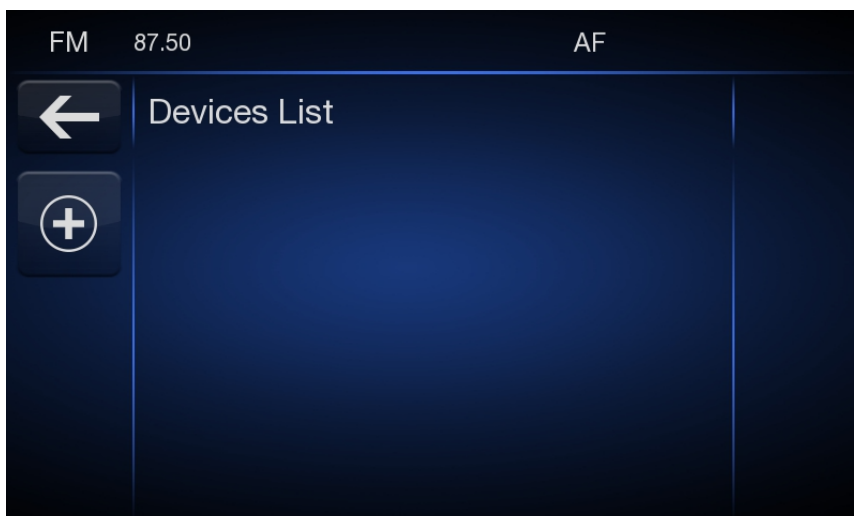
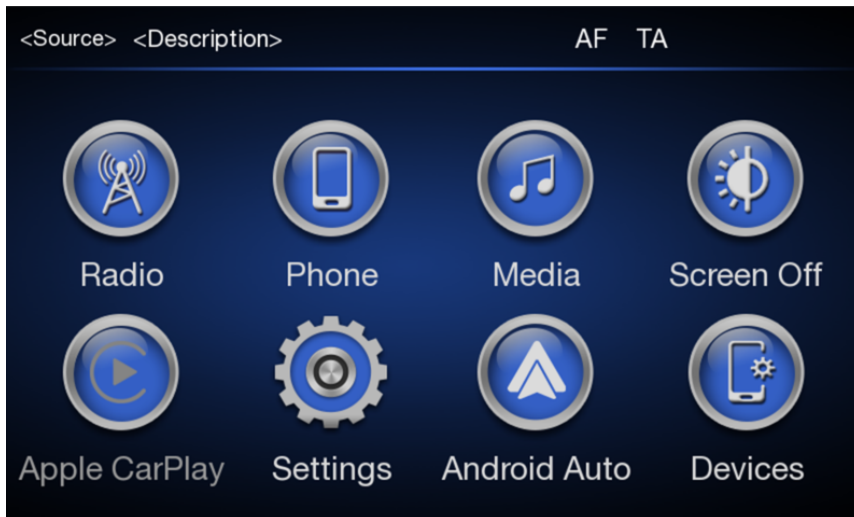
- Make sure that the wireless Android Auto setting is enabled on the phone.



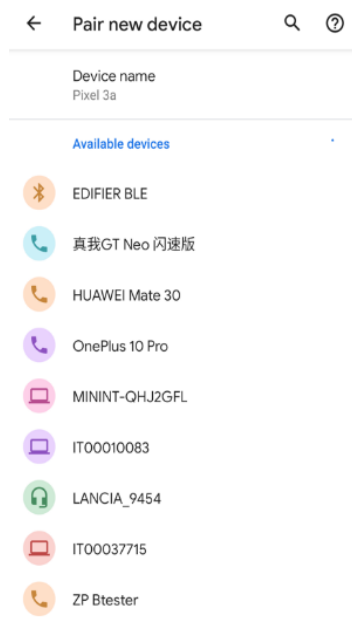
- Go into Bluetooth settings on the phone
- Tap on “Connected devices” then “Pair new device”



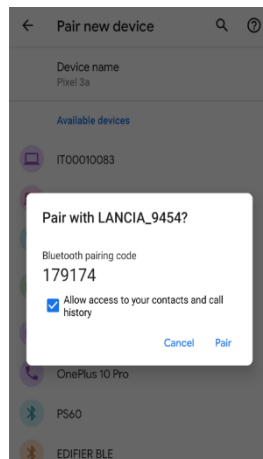
- Tap on “Devices” icon then “+”



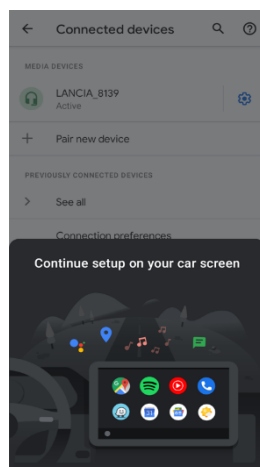
- Initiate Bluetooth pairing from device by tapping on radio's name



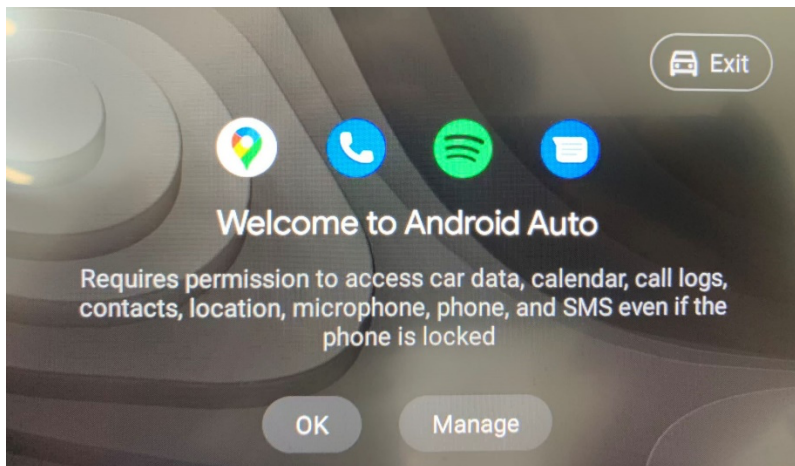
- Grant pairing permissions on the Android device



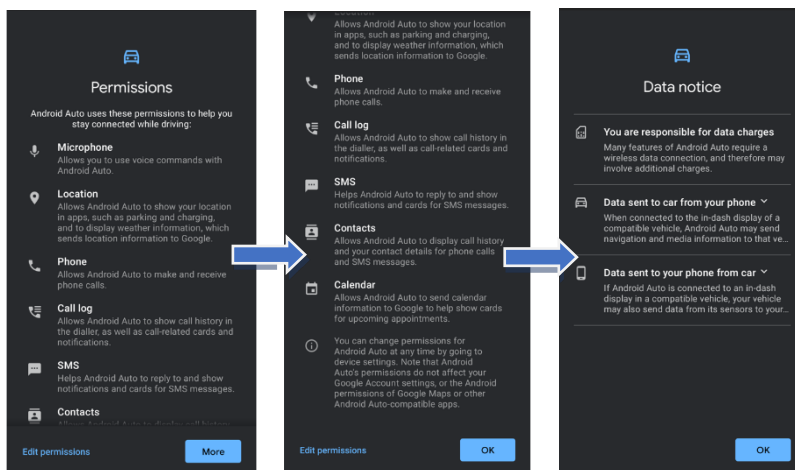
- Wait some minutes for pairing process then Android device will show a prompt



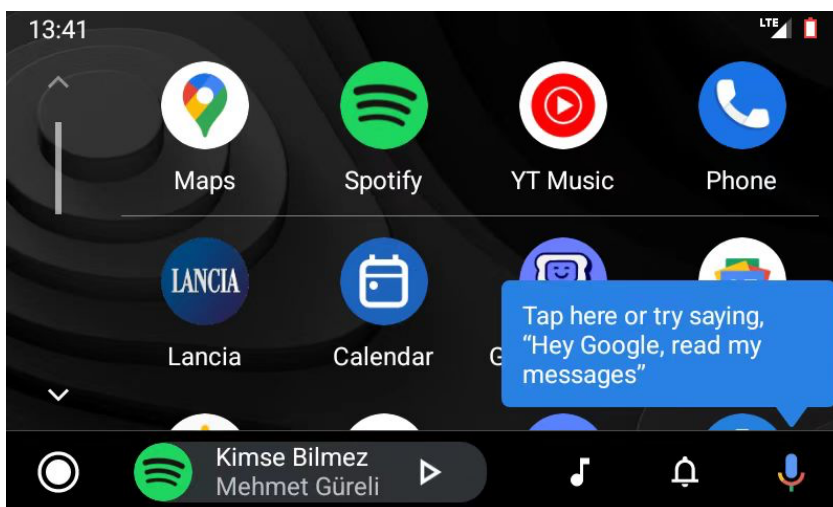
- Tap 'Manage' on the radio



- Confirm and Grant access permissions on the Android device when prompted



- Tap "Continue" on radio then Android Auto projection mode will be displayed

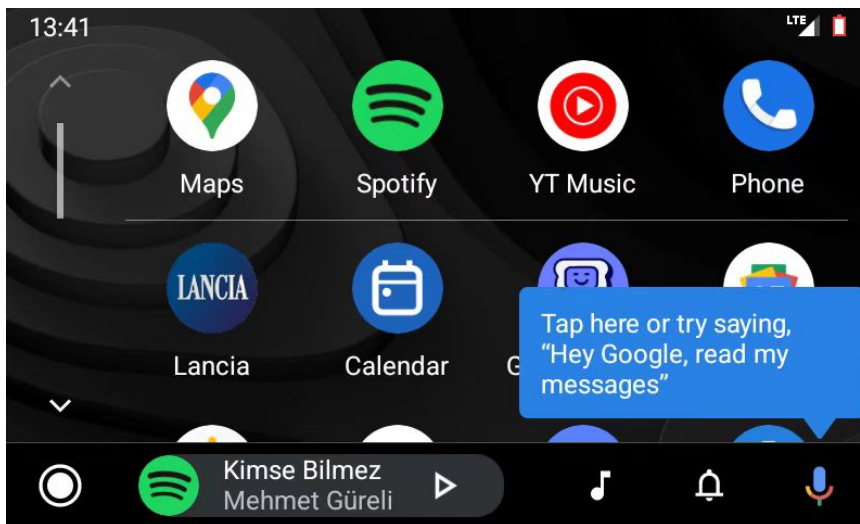


Second or subsequent connections

- Make sure there is an Android Auto icon on the home screen



- Tap on Android Auto icon to enter projection mode
- Android Auto projection mode will be displayed



How to access Android Auto after connecting

Tap on Android Auto icon to enter projection mode



Minimum requirements

Using Android Auto with a USB cable


- An Android phone with Android 8.0 and higher
- The latest version of the Android Auto App
- A high-quality USB cable that meets the standards of the USB Implementers Forum

Using Android Auto via Wi-Fi connection

- An Android phone with Android 11.0 and higher, with 5 GHz Wi-Fi supported
- The latest version of the Android Auto App
- For other specific phones, please check at [Get started with Android Auto](#)

Troubleshooting

If Android Auto projection isn't working,

- A. Check with the support team if your car is compatible
- B. Check if the device meets the minimum requirement
- C. Check your USB cable, a high-quality USB cable is needed and avoid using cable extensions
- D. Check device's Wi-Fi Switch is turned on
- E. Check your settings if you're connecting to a second car:
 1. Unplug your phone from the car
 2. Go to settings in phone, type "Android Auto" to search bar and press "Android Auto Settings".
 3. Select Menu  > Settings > Connected cars
 4. Enable the "Add new cars to Android Auto" setting
 5. Try plugging your phone into the car again
- F. Perform "Forget all cars" in the "Settings > Connected cars" menu on the phone.
- G. Restart the car's infotainment system
- H. Check with the support team if a new firmware update is available
- I. Check if the device network works well when using Google Assistant
- J. If the "Exit" button is clicked on the Android Auto acceptance screen and "Disable" is selected on the page that opens, the vehicle moves to the rejected vehicles section.

Explanation

Radio is compliant to EU norm "2022/179 of February 2022" which harmonizes the conditions for the availability and efficient use of the frequency bands for wireless access systems including radio local area networks (vehicles included).

Member States shall monitor the evolution of standards and technology in relation to the use of the frequency bands.

In this transition phase sporadic disconnections could occur in case of noises due to external disturbance.

Your WiFi connection will be automatically restored by the radio as soon as the disturbance disappears.

Disclaimer

Google, Android and Android Auto are trademarks of Google LLC. To use Android Auto on your car display, you'll need an Android phone running Android 8 or higher, an active data plan, and the Android Auto app.